

BUILDING NEWS

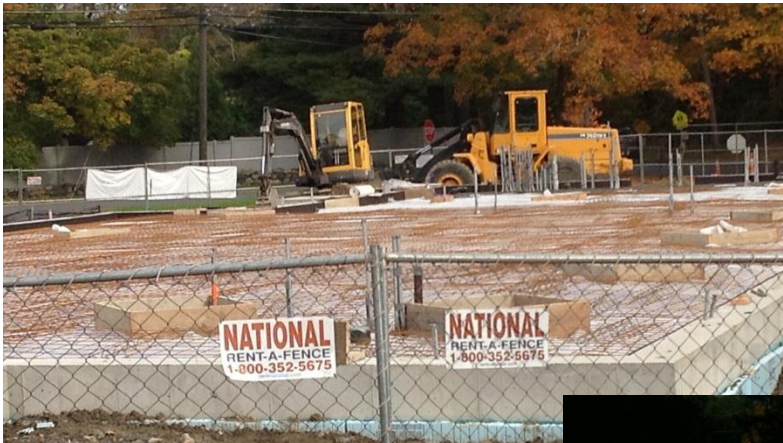


ST. ANDREW'S LUTHERAN CHURCH-ELCA
6 IVY HILL ROAD, RIDGEFIELD CT 06877
On the Web at: www.standrewselca.com

October 10, 2012
PHONE: 203-438-0606

Construction Update

This week, our contractor completed all of the “under floor” work – running electrical and sound system conduit and water pipes under the new sanctuary floor. Then they constructed the floor grid, which stabilizes the slab, so that ground motion (like last year's small earthquake) won't crack the slab.



You can see lots of conduit and pipes poking up from the under the floor...

Here you can see the conduit for the altar and the lectern, as well as a good view of the steel grid in the slab.



This morning, they poured the floor:



And now they've covered the slab so that it can cure, and not get too wet in the rain.

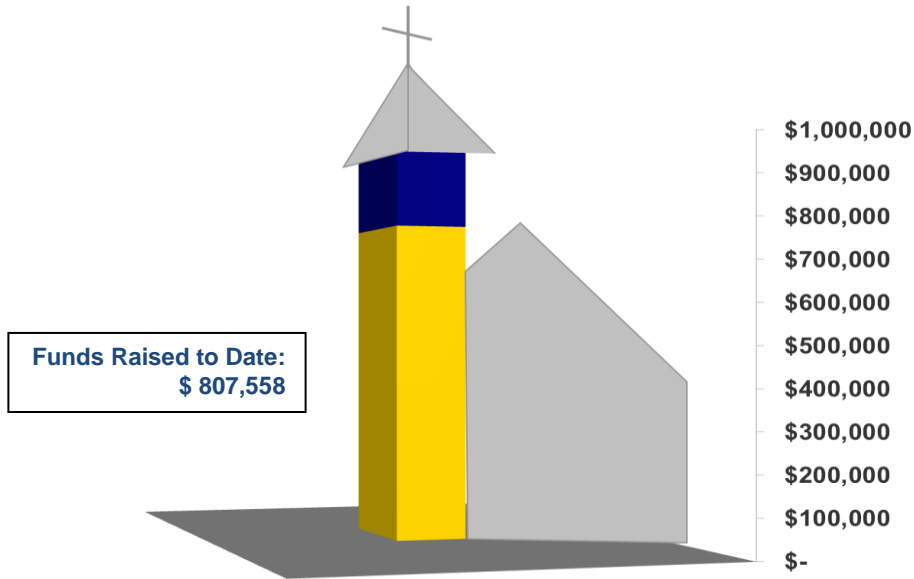
You'll also see work going on at the back of the lot, near the old "grove". This space will collect storm water run-off from the site, and release it slowly to the wetland at the back of our property. This stone wall will restrain the water, which can then flow through the blue pipe at a manageable rate.

Functional and beautiful!



Next Week
Walls! We go vertical!

Financial Update



One Last Thing

The construction site is a dangerous place. Please do not go inside the fenced area. Our contractor has promised that he will provide opportunities for us to tour the site at several points during the project in a safe and controlled manner! And please note that, at night, the north parking lot entrance will be closed for safety and liability reasons. When you come to evening events please use the south driveway (the one closest to Branchville Road, closest to the building).

Follow the progress of construction by viewing our photo gallery on our website